



Excelbis Labs
1920 E Warner Avenue
Santa Ana, CA 92705

(714) 340-7099
http://excelbislabs.com
Lic# C8-0000059-LIC

QA Testing

1 of 3

Candy glue

Sample ID: 2504EXL1517.6082

Strain: Candy glue

Matrix: Plant

Type: Flower - Cured

Sample Size: ; Batch:

Produced:

Collected:

Received:

Completed: 04/07/2025

Batch#: 2025Q2CDG

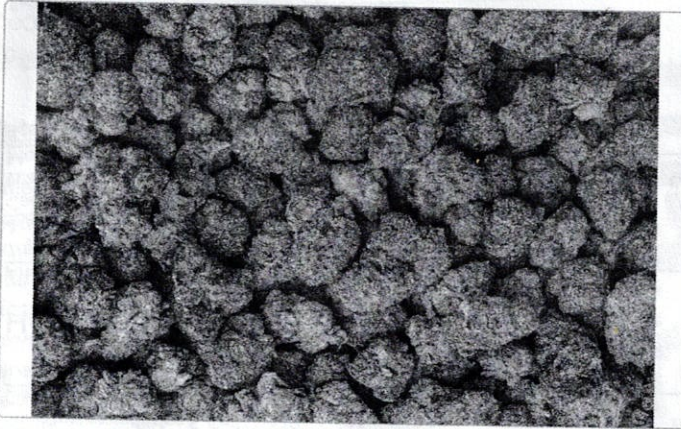
Client

HSP

Lic. #

516 D River Hwy #351

Mooresville, NC 28117



Summary

Test	Date Tested	Result
Batch		Pass
Cannabinoids		Complete
Foreign Matter	04/03/2025	Pass
Heavy Metals		Pass
Microbials		Pass
Mycotoxins		Pass
GCMS Pesticides		Pass
LCMS Pesticides		Pass

Cannabinoids

Complete

24.680%	0.074%	24.840%
Total THC	Total CBD	Total Cannabinoids

Analyte	LOD	LOQ	Result	Result
	mg/g	mg/g	%	mg/g
CBC	0.009	0.025	ND	ND
CBD	0.025	0.100	0.0742	0.742
CBDa	0.019	0.050	ND	ND
CBDV	0.125	1.000	ND	ND
CBDVa	0.257	0.780	ND	ND
CBG	0.019	0.050	0.0852	0.852
CBGa	0.125	0.250	ND	ND
CBN	0.009	0.050	ND	ND
Δ8-THC	0.025	0.100	ND	ND
Δ9-THC	0.019	0.100	0.2528	2.528
THCa	0.013	0.050	27.8534	278.534
THCV	0.025	0.100	ND	ND
Total THC			24.680	246.802
Total CBD			0.074	0.742
Total CBG			0.085	0.852
Total			24.840	248.396

Date Tested:

Total THC = THCa * 0.877 + Δ9-THC + Δ8-THC; Total CBD = CBDa * 0.877 + CBD; Total CBG = CBGa * 0.877 + CBG.
Total Cannabinoids = Total THC + Total CBD + Total CBG + minor cannabinoids.
Cannabinoids: HPLC, CAN-SOP-001
Water Activity: Water Activity Meter, WA-SOP-001
Moisture Content: Moisture Analyzer, MO-SOP-001
Foreign Matter: Visual Inspection, FM-SOP-001



Dr. Jerry White PhD Bryan Zahakaylo

Jerry White, PhD
Chief Scientific Officer

Bryan Zahakaylo

Analyst
04/07/2025

Confident LIMS
All Rights Reserved
coa.support@confidentlims.com
(866) 506-5866
www.confidentlims.com



ND = Not Detected, NR = Not Reported, LOD = Limit of Detection, LOQ = Limit of Quantitation. This product has been tested by Excelbis Labs LLC using valid testing methodologies and a quality system as required by state law. All LQC samples were performed and met the prescribed acceptance criteria in 16 CCR section 5730, pursuant to 16 CCR section 5726(e)(13). Values reported relate only to the product tested. Excelbis Labs LLC makes no claims as to the efficacy, safety or other risks associated with any detected or non-detected levels of any compounds reported herein. This Certificate shall not be reproduced except in full, without the written approval of Excelbis Labs LLC. This Certificate of Analysis is limited to the sample tested in a batch. This Certificate does not make any representation or warranty for all Products within the tested Batch.