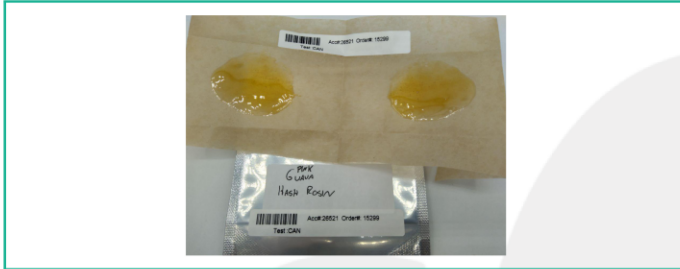


Frannys Farmacy
 204 Ek Park Drive #606
 Asheville, NC 28804
 wholesale@frannysfarmacy.com

Sample: 10-28-2022-26521
 Sample Received: 10/28/2022;
 Report Created: 10/31/2022; Expires: 10/31/2023

Pink Guava Hash Rosin
 Concentrate & Extracts



41.581%
 Total THC

0.188%
 Δ-9 THC

79.006 %
 Total Cannabinoids

30.582 %
 Total CBD

Cannabinoids

Complete

(Testing Method: HPLC, CON-P-3000)
 Date Tested: 10/28/2022

Analyte	LOD	LOQ	Mass	Mass	
	%	%	%	mg/g	
Δ-8-Tetrahydrocannabinol (Δ-8 THC)	0.1000	0.1500	ND	ND	
Δ-9-Tetrahydrocannabinol (Δ-9 THC)	0.1000	0.1500	0.188	1.879	
Δ-9-Tetrahydrocannabinolic Acid (THCA-A)	0.1000	0.1500	47.198	471.980	
Δ-9-Tetrahydrocannabinophorol (Δ-9-THCP)	0.1000	0.1500	ND	ND	
Δ-9-Tetrahydrocannabivarin (Δ-9-THCV)	0.1000	0.1500	ND	ND	
Δ-9-Tetrahydrocannabivarinic Acid (Δ-9-THCVA)	0.1000	0.1500	ND	ND	
R-Δ-10-Tetrahydrocannabinol (R-Δ-10-THC)	0.1000	0.1500	ND	ND	
S-Δ-10-Tetrahydrocannabinol (S-Δ-10-THC)	0.1000	0.1500	ND	ND	
9R-Hexahydrocannabinol (9R-HHC)	0.1000	0.1500	ND	ND	
9S-Hexahydrocannabinol (9S-HHC)	0.1000	0.1500	ND	ND	
Tetrahydrocannabinol Acetate (THCO)	0.1000	0.1500	ND	ND	
Cannabidivarin (CBDV)	0.1000	0.1500	0.162	1.620	
Cannabidivarinic Acid (CBDVA)	0.1000	0.1500	ND	ND	
Cannabidiol (CBD)	0.1000	0.1500	30.208	302.080	
Cannabidiolic Acid (CBDA)	0.1000	0.1500	0.426	4.260	
Cannabigerol (CBG)	0.1000	0.1500	ND	ND	
Cannabigerolic Acid (CBGA)	0.1000	0.1500	0.824	8.240	
Cannabinol (CBN)	0.1000	0.1500	<LOQ	<LOQ	
Cannabinolic Acid (CBNA)	0.1000	0.1500	ND	ND	
Cannabichromene (CBC)	0.1000	0.1500	ND	ND	
Cannabichromenic Acid (CBCA)	0.1000	0.1500	0.530	5.300	
Total			79.006	790.059	

Total THC = THCa * 0.877 + Δ9-THC; Total CBD = CBDa * 0.877 + CBD; LOQ = Limit of Quantitation; ND = Not Detected.

Total THC Measurement of Uncertainty: ± 0.040%
 Total CBD Measurement of Uncertainty: ± 2.000%
 THCO potency analysis does not designate quantitative specificity of Δ-8-THCO and Δ-9-THCO isomers

New Bloom Labs
 6121 Heritage Park Drive, A500
 Chattanooga, TN 37416
 (844) 837-8223
 TN DEA#: RN0563975

Natalie Siracusa
 Natalie Siracusa
 Laboratory Director

New Bloom Labs
 10606 Shady Trail, 105
 Dallas, TX 75520
 (844) 837-8223
 TX DEA#: RN0594653

Powered by
 reLIMS
 info@relims.com